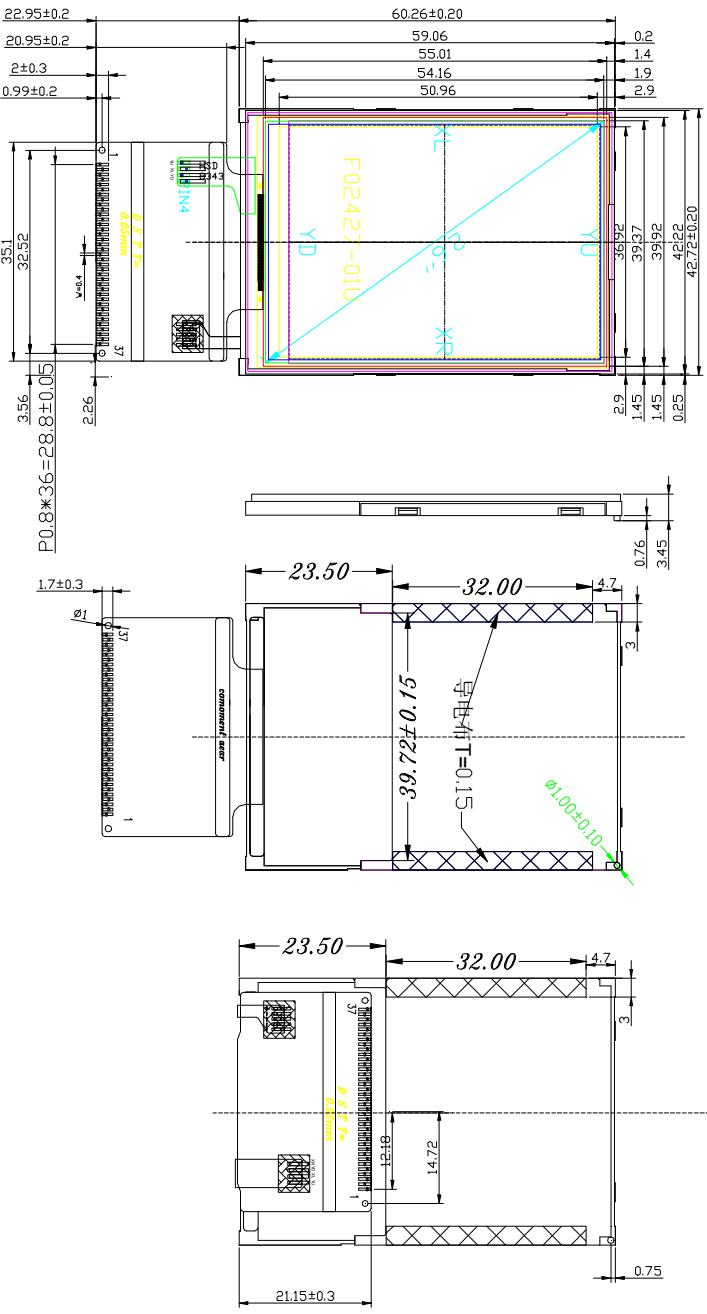
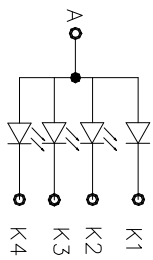


REV:	DESCRIPTION	BY	DATE
V1.0	New Issue	SD-06	2015-04-25



背光电路图:



- NOTE:
1. Display Type: 2.4" TFT, Transmissive
 2. Driver IC: ILI9341
 3. Viewing Direction: 12 o'clock
 4. Connector: 37PIN 0.8mm 的焊接
 5. Operating Temperature: -20° - +70°
 6. Storage Temperature: -30° - +80°
 7. Backlight Type: White LEDs
 8. BL Input Current: 60 or 80 mA
 9. LCM Brightness: 250 cd/m Typ

NO.	Pin Name
1	DB0
2	DB1
3	DB2
4	DB3
5	GND
6	IOVCC
7	CS
8	RS
9	/WR
10	/RD
11	NC
12	XL
13	YU
14	XR
15	YD
16	LED-A
17	LED-K1
18	LED-K2
19	LED-K3
20	LED-K4
21	TE
22	DB4
23	DB8
24	DB9
25	DB10
26	DB11
27	DB12
28	DB13
29	DB14
30	DB15
31	/RET
32	VCC
33	VCC
34	GND
35	DB5
36	DB6
37	DB7

 SINDA DISPLAY TECHNOLOGY CO., LTD.		SHEET: 1 of 1	
MODEL NUMBER :		DATE	
SDT02401-A37		2015-04-25	
APPROVALS		APPROVALS	
DWN		SD-06	
APP		SD-11	
www.sindadisplay.com		SCALE: 1:1	
VERSION: 1.0		UNITS: MM	
GENERAL TOL: ± 0.2		DO NOT SCALE THIS DRAWING.	