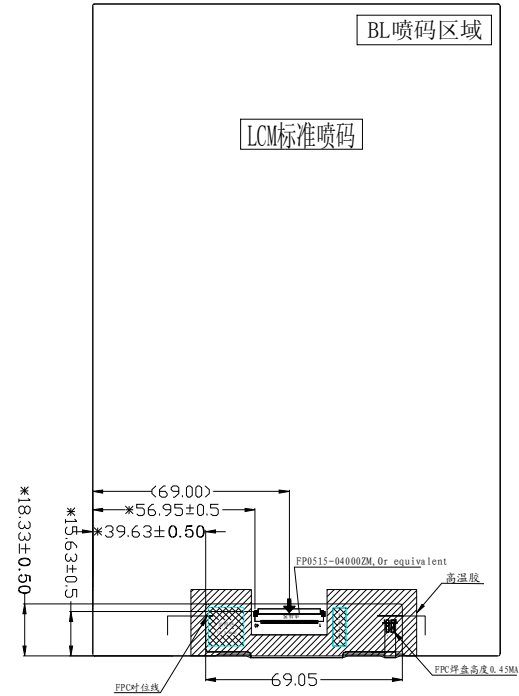
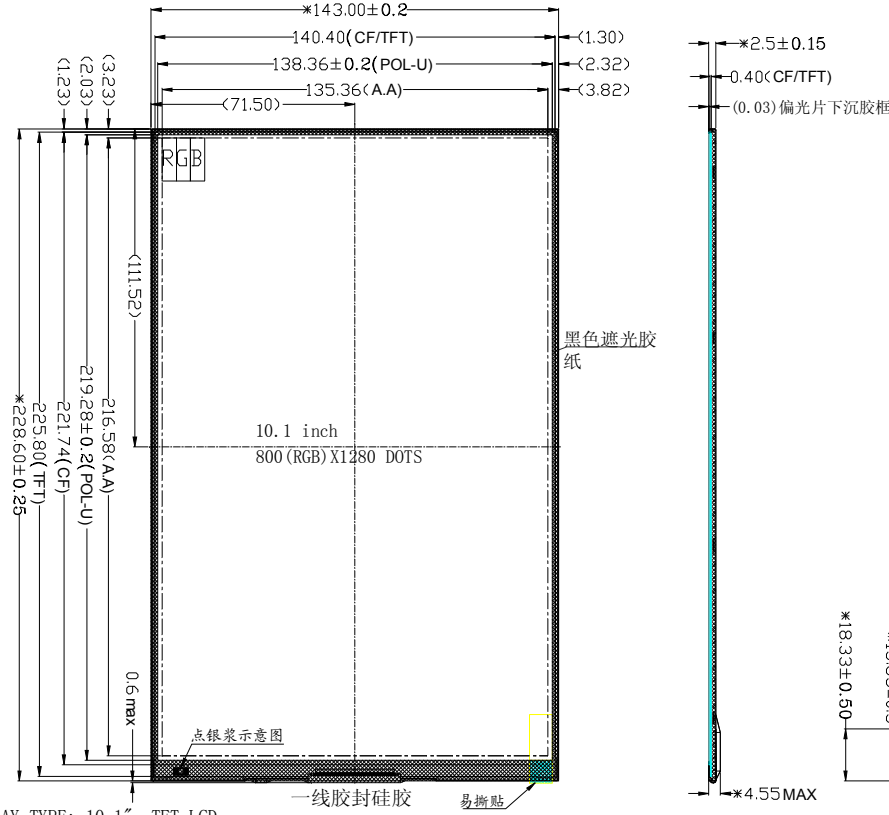


装配基准：FOG左上角对位

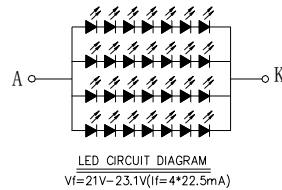
REV 版本	DESCRIPTION 描述	DATE 日期
A00	First issue	2016-06-03



PIN	symbol
1	NC
2	VCC-LCD3V3
3	VCC-LCD3V3
4	NC
5	RESET (1.8V)
6	NC
7	GND
8	MIPI_D2N
9	MIPI_D2P
10	GND
11	MIPI_D1N
12	MIPI_D1P
13	GND
14	MIPI_CKN
15	MIPI_CKP
16	GND
17	MIPI_D0N
18	MIPI_D0P
19	GND
20	MIPI_D3N
21	MIPI_D3P
22	GND
23	NC
24	NC
25	GND
26	NC
27	NC
28	NC
29	NC
30	GND
31	VLED-
32	VLED-
33	NC
34	NC
35	NC
36	NC
37	NC
38	NC
39	VLED+
40	VLED+

NOTES:

- DISPLAY TYPE: 10.1", TFT LCD
- DISPLAY MODE: Normally Black
- VIEWING DIRECTION: 85/85/85/85 (typ)
- DRIVER IC: NT35521SH
- LCM (White 9 AVG 1/6) :
Brightness: 210cd/m² (MIN), 260cd/m² (TYP)
Chromaticity: 0.30+/-0.03; 0.32+/-0.03.
Uniformity: 70% (MIN) 75% (TYP)
- BACK LIGHT: 28 CHIP WHITE LED (22.5mA/LED), Vf=21V-23.1V
- OPERATING TEMP: -10° C to 50° C, STORAGE TEMP: -20° C to 60° C
- * Critical Parameter, () ref Parameter, [] cpk Parameter
Unspecified Tolerances: ±0.30mm
Modification mark: Δ
- SUGGESTION: TP window size unilateral increase 0.3~0.5mm than LCM A.A
- REQUIREMENTS ENVIRONMENTAL PROTECTION: RoHS



黑色遮光胶纸 高温胶

SCALE:	FIT
SHEET:	1 OF 1
UNIT: MM	\varnothing



SINDA DISPLAY TECHNOLOGY CO.,LTD

APP:	DATE:	MODEL NO: SDT10102N-40
CHK:	DATE:	PART NO:
DWN: 邱尊	DATE: 2016-06-04	TITLE: LCM