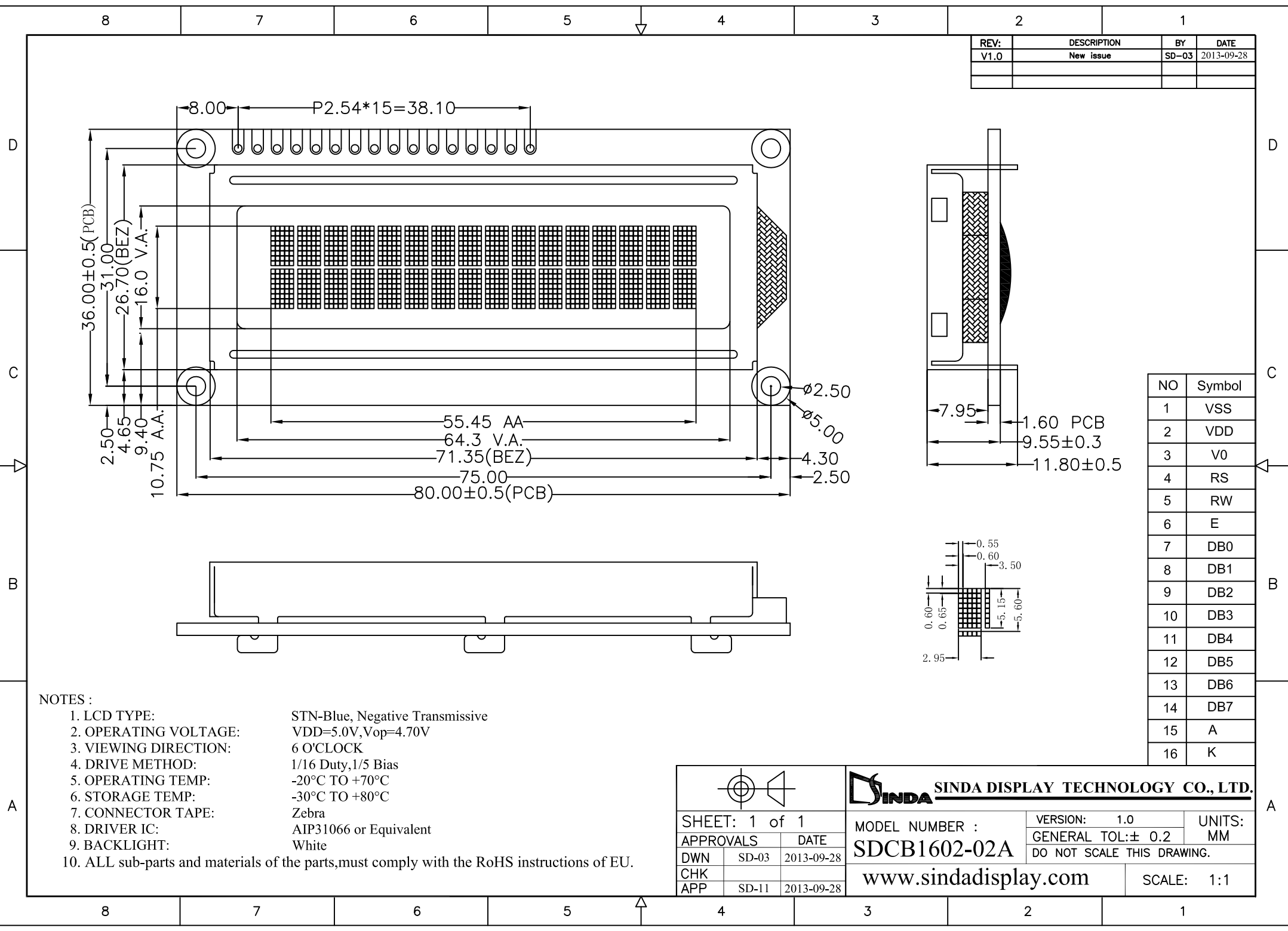
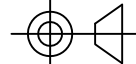


REV:	DESCRIPTION	BY	DATE
V1.0	New issue	SD-03	2013-09-28



NO	Symbol
1	VSS
2	VDD
3	V0
4	RS
5	RW
6	E
7	DB0
8	DB1
9	DB2
10	DB3
11	DB4
12	DB5
13	DB6
14	DB7
15	A
16	K

- NOTES :
- |                       |                                 |
|-----------------------|---------------------------------|
| 1. LCD TYPE:          | STN-Blue, Negative Transmissive |
| 2. OPERATING VOLTAGE: | VDD=5.0V, Vop=4.70V             |
| 3. VIEWING DIRECTION: | 6 O'CLOCK                       |
| 4. DRIVE METHOD:      | 1/16 Duty, 1/5 Bias             |
| 5. OPERATING TEMP:    | -20°C TO +70°C                  |
| 6. STORAGE TEMP:      | -30°C TO +80°C                  |
| 7. CONNECTOR TAPE:    | Zebra                           |
| 8. DRIVER IC:         | AIP31066 or Equivalent          |
| 9. BACKLIGHT:         | White                           |
10. ALL sub-parts and materials of the parts, must comply with the RoHS instructions of EU.

		<b>SINDA DISPLAY TECHNOLOGY CO., LTD.</b>	
SHEET: 1 of 1		MODEL NUMBER :	VERSION: 1.0
APPROVALS		DATE	UNITS: MM
DWN	SD-03	2013-09-28	DO NOT SCALE THIS DRAWING.
CHK			
APP	SD-11	2013-09-28	
www.sindadisplay.com			SCALE: 1:1