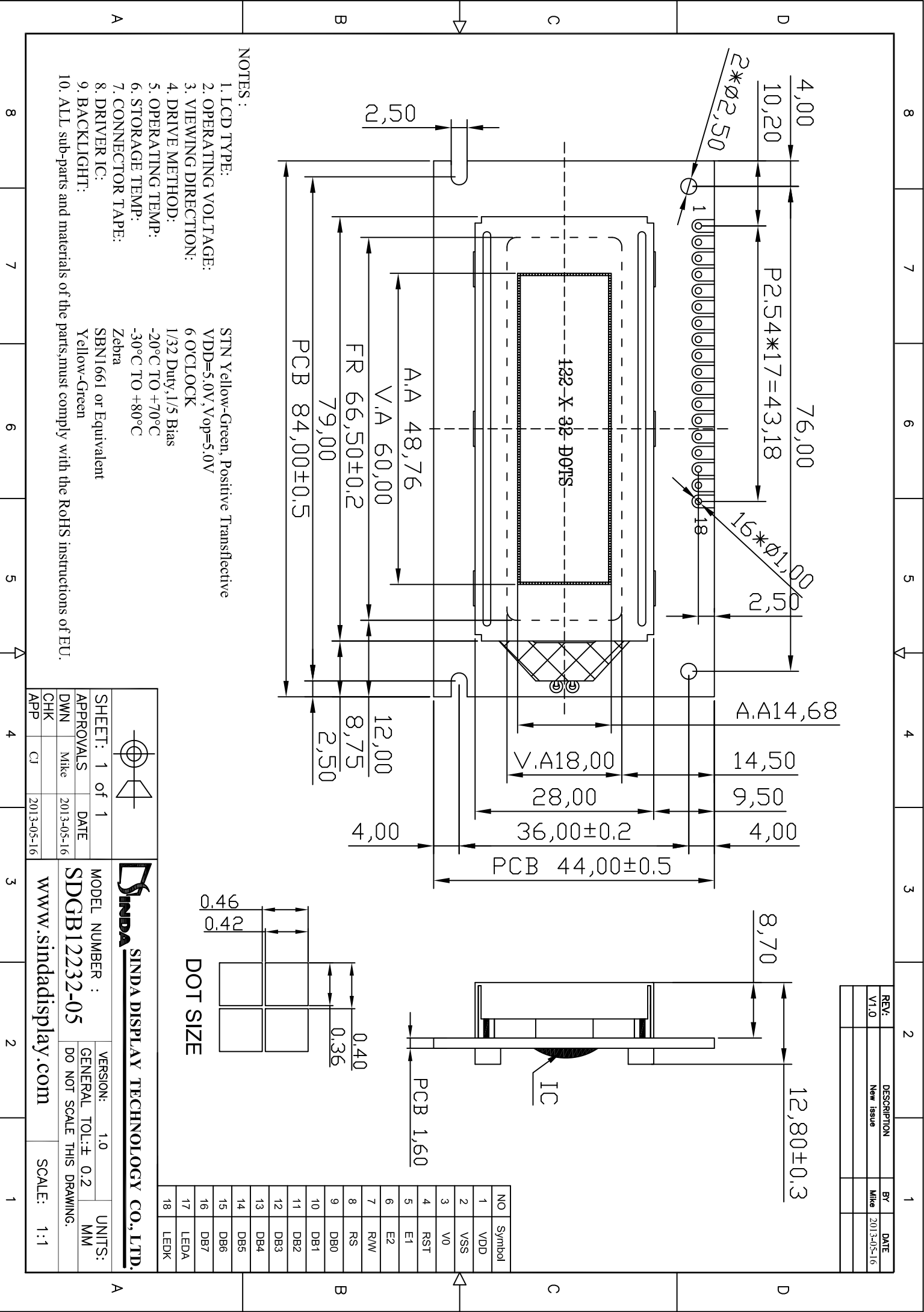
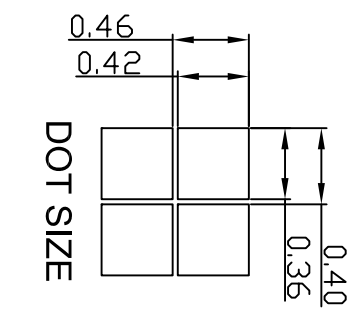


REV:	DESCRIPTION	BY	DATE
V1.0	New Issue	Mike	2013-05-16



NOTES :

1. LCD TYPE: STN Yellow-Green, Positive Transflective
2. OPERATING VOLTAGE: VDD=5.0V, Vop=5.0V
3. VIEWING DIRECTION: 6 O'CLOCK
4. DRIVE METHOD: 1/32 Duty, 1/5 Bias
5. OPERATING TEMP: -20°C TO +70°C
6. STORAGE TEMP: -30°C TO +80°C
7. CONNECTOR TAPE: Zebra
8. DRIVER IC: SBN1661 or Equivalent
9. BACKLIGHT: Yellow-Green
10. ALL sub-parts and materials of the parts, must comply with the RoHS instructions of EU.



NO	Symbol
1	VDD
2	VSS
3	V0
4	RST
5	E1
6	E2
7	R/W
8	RS
9	DB0
10	DB1
11	DB2
12	DB3
13	DB4
14	DB5
15	DB6
16	DB7
17	LEDA
18	LEDC

SINDA DISPLAY TECHNOLOGY CO., LTD.		VERSION: 1.0	UNITS: MM
		MODEL NUMBER : SDGB12232-05	GENERAL TOL: ± 0.2
SHEET: 1 of 1 APPROVALS: DWN Mike DATE: 2013-05-16 APP: CJ		DO NOT SCALE THIS DRAWING. SCALE: 1:1	
www.sindadisplay.com			